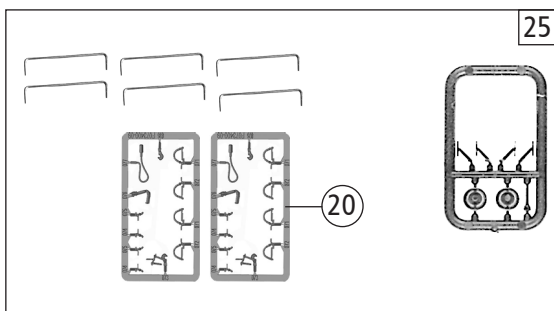
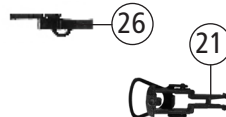
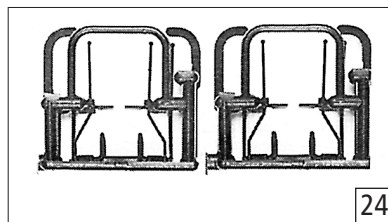
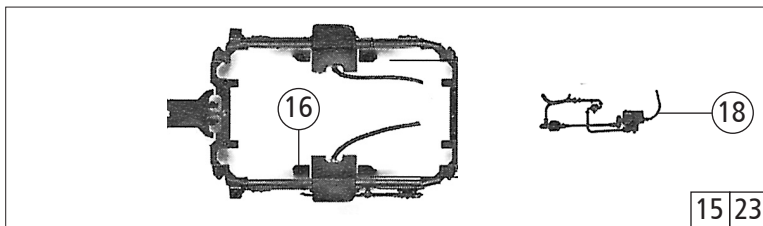
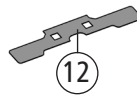
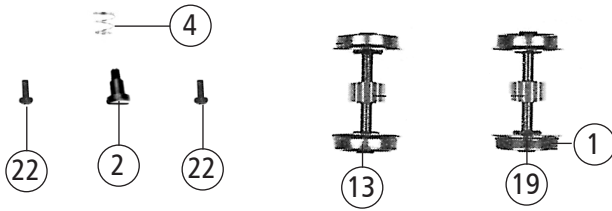
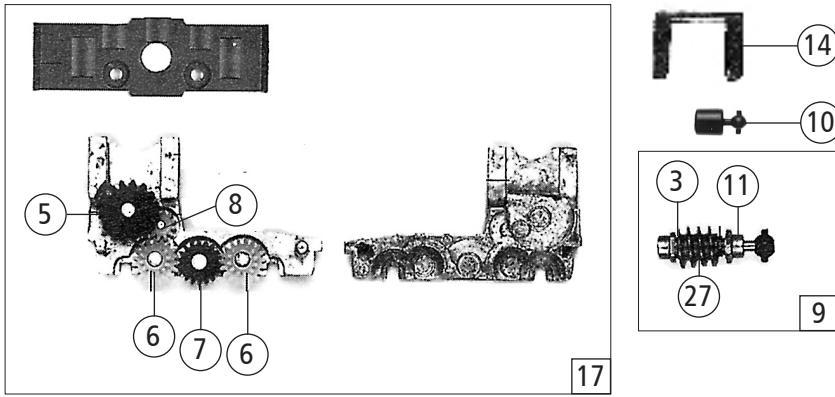


Pos. Nr. Pos.no.	Beschreibung Description	Art.-Nr. Art.no.	Preisgruppe Price bracket
1	Gehäuse komplett Betr.Nr. 212 097-0 Body complete loco no. 212 097-0	149277	24
2	Kardanschale kurz Cardan shell short	87129	4
3	Platine komplett Printed circuit assembly	141790	19
4	Antenne silber Antenna silver	88030	5
5	Lokführer Loco driver	149276	6
6	Dach Roof	149280	10
7	Führerstand Drivers cab	94756	6
8	Fenster für Kabine Cabine window	147746	8
9	Brückenstecker Jumper	133241	10
10	TS - Linsen Part set - Lenses	141789	8
11	UIC-Dose UIC-Socket	149279	3
12	Kabine kpl. Cabine compl.	149278	21
13	Puffer flach Buffer flat	101351	4
14	Puffer gewölbt Buffer vaulted	101352	4
15	Schienenräumer Pilot frame	101356	4
16	Schraube M2x16 mm Screw	115094	3
17	Motor Motor	143272	28
18	Steuerrad Steering wheel	113975	3
19	Grundrahmen Base frame	149275	19
20	GF-Schraube M2x5 mm GF-Screw	114966	3
21	Dekoderdeckel Decoder cover	115400	4
22	Motordistanzplatte Spacer	117202	3
23	TS-LED-Abdeckung Part set-LED-covers	141792	5



Pos. Nr. Pos. no.	Beschreibung Description	Art.-Nr. Art. no.	Preisgruppe Price bracket
1	Haftringsatz 10Stk. 10,3-12,8mm Set with traction tires 10 pieces	40068	---
2	FK-Schraube mit Gewindeauslauf FK-Screw with back taper thread	85704	4
3	Beilagscheibe Washer	86108	3
4	Feder Spring	86202	3
5	Schneckenzahnrad doppelt Gear double	86419	6
6	Zahnrad Z=19/12 M 0.4 Gear	86424	4
7	Zahnrad Z=18 gerade M=0.4 Gear	86460	3
8	Zahnrad Z=12/ M 0.4 Gear	86471	3
9	Schneckensatz komplett Worm set ass.	86868	13
10	Gelenkwelle Cardan shaft	87138	4
11	Lager für Schneckenachse Bearing for worm axle	89749	6
12	Radkontakt Wheel contact	89879	6
13	Radsatz ohne Haftring mit Zahnrad Wheelset without traction tires with gear	90474	11
14	Schneckendeckel Worm cover	94707	4
15	Drehgestellblende kurzer Vorbau komplett Bogie frame short front end completely	94773	12
16	Bremsbackensteckteile Brake shoe push in part	94775	4
17	Getriebesatz ohne Zahnräder Gear set without gears	100042	13
18	Drehgestellsteckteile Bogie push in part	107102	4
19	Radsatz mit 2 Haftringen Wheelset with 2 traction tires	107388	12
20	TS - Bremsschläuche + Zughaken Part set of brake tubes & coupling hooks	139832	7
21	Standardkupplung Standard coupling	89246	6
22	GF - Schraube M2x5 mm GF - Screw	114966	3
23	Drehgestellbl. langer Vorbau komplett Bogie frame long front end completely	115415	12
24	Aufstiegsatz Rear ladder set	120303	8
25	Zurüstbeutel Bag with accesories	149281	13
26	Kurzkupplung-Vorentkupplung Short coupling- pre-uncoupling	115550	6
27	Schnecke Wormgear	86704	6